

# MONTHLY MEMBERSHIP PROGRESS REPORT

LOCATION TENNESSEE

District 12 I

Results as of: 6/30/2022

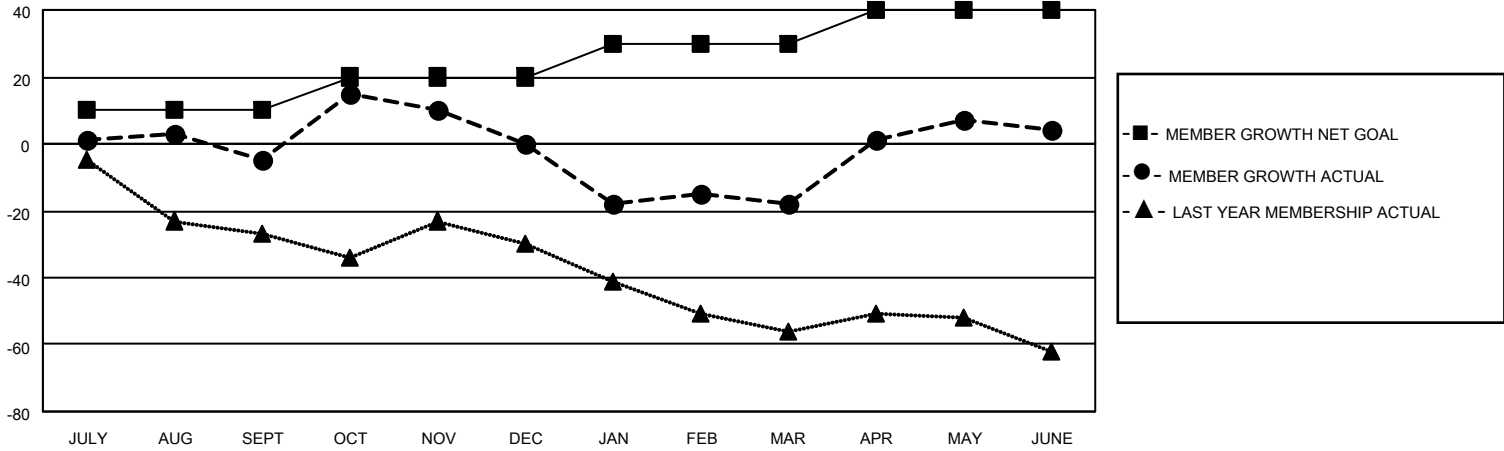
Clubs			
RESULTS FOR 2021-2022			
QUARTER	NEW CLUB GOAL	NEW CLUBS	DROPPED CLUBS
JULY/AUG/SEPT	0	0	0
OCT/NOV/DEC	0	0	0
JAN/FEB/MAR	0	0	0
APR/MAY/JUNE	1	0	1

Members			
RESULTS FOR 2021-2022			
QUARTER	MEMBER GROWTH NET GOAL	MEMBER GROWTH ACTUAL	DROPPED MEMBERS ACTUAL (including transfers)
JULY/AUG/SEPT	10	27	26
OCT/NOV/DEC	10	35	27
JAN/FEB/MAR	10	16	32
APR/MAY/JUNE	10	57	31

**GOALS AND ACTUAL NEW CLUBS CUMULATIVE**



**GOALS AND ACTUAL MEMBERS CUMULATIVE**



**DROPPED CLUBS: 1**

**26 CLUBS OF 36 ADDED 1 OR MORE NEW MEMBERS**

**GENDER DISTRIBUTION**

MALE	564 (64.53%)
FEMALE	310 (35.47%)
NON BINARY	0 (0.00%)
PREFER NOT TO ANSWER	0 (0.00%)

**DROPPED MEMBERS**

DECEASED	17
CLUB CANCELLED	4
OTHER	95
<b>TOTAL</b>	<b>116</b>

[CLICK HERE FOR CUMULATIVE MEMBERSHIP DATA](#)

TOTAL FAMILY UNIT MEMBERS	215
FAMILY MEMBERS PAYING HALF DUES	109